

JIB SHEETS



November / December 2018

MTYC OFFICIAL NEWSLETTER



Deja Vu
arriving
Constitution
Dock
13/12/2018

See story inside

Melbourne Trailable Yacht Club Inc

Registration No A2058

Website: www.mtyc.yachting.org.au

Commodore's Report – November 2018

There has been a lot on, and there's a lot coming up with something for everyone. There are racing, cruising, and social events filling up the calendar.

Our 2018 Winter Series proved challenging, after 3 consecutive race days lost to strong and gale force winds, the last race day in September saw the Weather Gods smile upon us. 5 boats and their crews took advantage of the day with winds that started at 10-15 knots and gradually and continually abated over the course of the afternoon.

The 2018-2019 Traveller's Series kicked off with the Warneet Motor Yacht Club's Around French Island Race (WAFIR). The light conditions added to the challenges of this great race. The hospitality of the Warneet club was not diminished despite being in the middle of a major club house renovation and having to run the entire event from the boat shed.

Don't miss heat 2, GTYC's Pelican Race Saturday 10 December.

Crew are ALWAYS needed. Our Thursday Twilight racing commenced 11 October. The key to the success of these races is participation. 3 boats took part in races 1 and 2, and 5 boats in race 3 and on all occasions there were vacant crewing opportunities. Crew are ALWAYS needed. Hopefully as the evenings become both warmer and longer fleet sizes will continue to grow.

As usual sign on and collect your sailing instructions and start time at the fuel dock. First Start is at approximately 18:00 hrs. Crew are ALWAYS needed. Come along and support this long running social sailing event. BYO meat etc. for the post race BBQ. And, did I mention, Crew are ALWAYS needed.

Your Inflatable life jackets require annual inspection. For those members that purchased Crewsaver PFDs through the Club, this was 3 years ago. The auto inflation capsules in these PFDs are rapidly approaching their replace by date. So to en-

courage you to properly maintain and service your PFDs MTYC held a PFD servicing day at the State Sailing Centre at the Boatshed, Albert Park. 10 members took the opportunity to self-check their PFDs together.

We have secured a limited stock of the auto inflation capsules and retaining clips available for you to purchase here <https://mtyc.yachting.org.au/shop/1809/>

2018-19 Summer Series racing started up again with the Long Course Series, Race 1 (also The Commodore's Cup) on 14 October. 5 yachts enjoyed the fresh and challenging 15-20 knots NNE breeze, after a delayed start thanks to the Melbourne Marathon, See the results further in the newsletter.

6 MTYC yachts (Laros, Mystic, Farr Affair, Juniper, No Excuses, and Silhouette) cruised up the River to Docklands for the VTVD Season Opening Weekend 20-21 October. After rigging in pouring rain that slowly cleared before launching. 5 (Laros went on Friday) did the cruise in company with a Sunmaid 20 from Warneet joining us, stopping for lunch at Williamstown's Ferguson St. Pier, before heading up the River to Melbourne City Marina. Other members using land based transportation joined us for Happy hour in the Marina Lounge before moving on to the Dinner at Waterfront. Congratulations to Ron Parker and Ruth Eaton winners of the Cruising Helmsman Bob Couper Memorial nautical Trivia Quiz. This is a double edged sword, because with the glory comes the responsibility of being next year's Quiz Masters.

And all this is just what's been coming up there's even more...

Melbourne Cup weekend is just around the corner as I write this, and I'm hoping a good number of



MTYC boats get down to the Gippsland Lakes (our traditional cruising ground) for the long weekend. A Charity Poker Run event has been organised for Saturday 3 November to raise money for the drought stricken farmers.

VTYD Traveller Series race 2 the GTYC Pelican Race is on 10 November, this will be the second time GTYC have held this race in place of the old Queenscliff to Geelong Race. The Pelican race is a passage race around the Inner and Outer harbours of Corio Bay. Starting and Finishing at St Helen's it removes the logistical hassle that was associated with the Q2G race.

We are currently negotiating combining Summer Long Course Series race 2 with the RYCV Lipton Cup passage race on 18 November.

Then on 1 December, VTYD Traveller Series is off to Port Albert for PAYC's Around Sunday Island Race. Race 3 in the series on Saturday with a cruise on the waters of Port Albert on Sunday, arranged by PAYC, for those that would like to extend their stay.

Save the Date 15 December MTYC Christmas Party

This year we have arranged a very special Christmas Party, a BBQ in the Mission to Seafarers Courtyard!

This is always a great social evening with fellow members. Come by sea and stay at Yarra's Edge Marina only a short walk away, or Come by Public transport, or Drive (Parking available). Further Details to follow soon.

Marina Re-Development.

No doubt you've heard about the crazy Marina re-development proposals for the St Kilda Marina and precinct. Thanks to those members that took the time to complete the survey. Your committee is working hard to ensure theailable yachting community are heard in this process.

As there won't be another newsletter prior to the Christmas New Year break, I'll take this opportunity to wish all members a safe and happy holiday

2018 Winter Series

Unfortunately the 2018 Winter Series was severely shortened due to a succession of strong & gale wind warnings on the race days for June, July, & August. For September, however 'Huey' the Weather God smiled on us and delivered a great day on the water.

The first race of the day, was comfortably completed in under 90 minutes by all, the second race however saw all competitors becalmed at some stage (as 'Huey reminded us who's in charge), and the fleet split dramatically extending elapsed times to between 2 & 2.5 hours.

But The Summer Season is fast approaching with lots of great sailing opportunities. Cruising, Thursday Twilight racing, the Long and Short Course Summer Series races and the Victorianailable Yacht Division's Traveller Series just to name a few.

season. Hopefully however I'll see you at one of the many events coming up, because just in case I failed to mention it participation is vital to all of the activities we hold whether it's Social, Cruising or Racing and Crew are ALWAYS needed.

Doug Whitby



*Wishing all a
Happy Christmas and
best wishes for the New Year,
which includes fair winds
and lots of sailing...
Your committee*



M



T



Y



C

IMPORTANT INFORMATION

We need Members to log in to update their personal information on the club database.

MAKE SURE ALL Your details are correct

Especially:-

Emergency Contact Information Check that it's there and correct

Date of Birth is correct (this is one of the details the system uses to identify you as you)

Email Address please make sure it's correct (and the one you look at)

Boat Details from 112 members there are currently 11 boats in the club????

Thank you for your help with this.

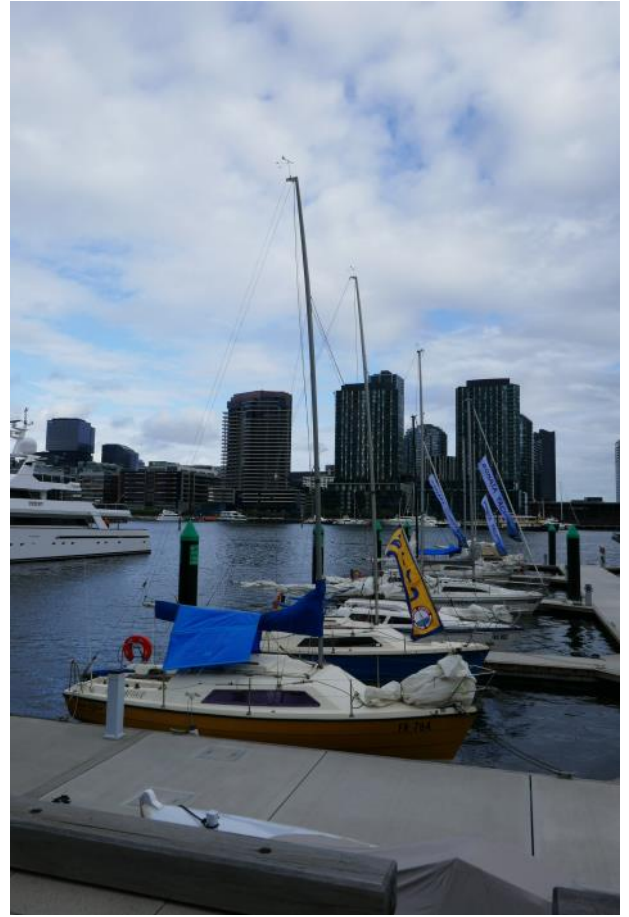
Log In here <https://mtyc.yachting.org.au/login/>

Use the Forgot Log In Details to reset your password

Thank You



Some pictures from the Season
Opening Weekend on the water...



More pictures from Season Opening, including presenters and winners of the Quiz!

The Travels of *Deja Vu*



Peter and Janet and déjà vu at HBYC

<https://hotel370.blog/>

Déjà vu is a Cavalier 37 which Peter and Janet bought over a year ago. Since then, they have been working hard to bring the boat back to a good cruising standard, and a few weeks ago set off on their first adventure with Kevin and Erika.

Janet has been recording their adventures in a blog and they are a great read. We have Janet's permission to share their adventures with you.

Some extracts and pictures to whet your appetite...

Oct 23: Yesterday we connected up our AIS transponder and it works! All commercial shipping has to have real-time tracking of position and movement, but we feel it will be of great comfort to know that our small presence will also show up on the big boys' navigation screens.



Boarding at HBYC



We're off—Four Fingers West...

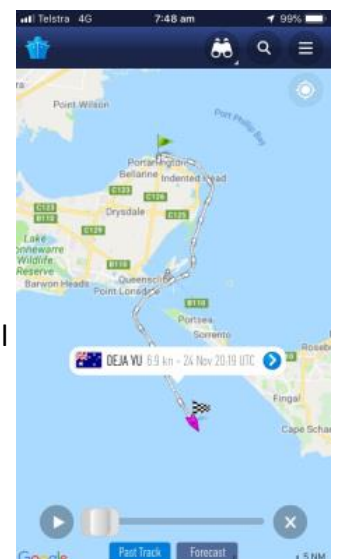
...

Yesterday (8th December) we continued our journey south, making for Maria Island. Our track took us directly past a small island, Ile des Phoques (Island of Seals). Kevin was keen to sail in close to the island, hoping to see seals. We did...

(pic on next page...)



It's going to be a long trip!!! - Peter.



Nautilus Marine Insurance – Australian Sailing Member Personal Accident

Australian Sailing members automatically covered for accidents that occur.
Part of membership, purchased by Australian Sailing, no cost to member/club/
association.

Broad limits, summary of cover included:

Death & Permanent Disablement

A lump sum benefit is payable in the event of death or permanent disablement. The scale of benefit is defined in the policy. The death benefit is \$75,000 for members up to 85 years old & \$10,000 for members under 18 years old.

Non Medicare Medical Expenses

Reimburses up to 100% of Non-Medicare medical expenses up to a maximum of \$5,000 subject to a \$50 excess.

Claimable expenses are private hospital bed & theatre fee, ambulance, net of any recoveries from private health.

Cover is limited to expenses incurred within 12 months from the date of the injury.

Physiotherapy Benefit

Reimburses between 75% to 95% of costs incurred up to a maximum of \$30-\$45 per visit up to a maximum of \$750.

Cover is limited to expenses incurred within 12 months from the date of the injury.

Student Tutorial Costs

Reimburses up to 80% of costs incurred up to a maximum of \$300 per week, for home tuition by a qualified tutor. If the injury stops the Injured Person from going to their external tutor outside the home for up to 52 weeks with a 7 day excess period.

Domestic Help Benefit

Reimburses up to 80% of costs incurred up to a maximum of \$300 per week for a recognised and licensed home help service, if the injury stops the Injured Person from usual & normal duties as a homemaker, sole provider for dependent children such as child-minding, cleaning, cooking, school pick-ups & drop offs for up to 52 weeks with a 7 day excess period.

Broken Bones

We will pay up to \$5,000 any one accident. Cover only applies if the event occurs within twelve (12) calendar months of the date of injury. Please refer to the policy wording & Certificate of Insurance for details of the cover provided & policy limits.

Dental

We will pay up to \$5,000 any one accident. Cover only applies if the event occurs within twelve (12) calendar months of the date of injury. Please refer to the policy wording & Certificate of Insurance for details of the cover provided & policy limits.

Loss of Income

Weekly Benefit 100% of pre-injury Salary, if prevented from working in your Occupation up to maximum \$ 300 per week.
The Benefit period is 52 weeks & the excess is 7 days.



Seals on Ile de Phoques

(Travels of Déjà Vu)

SailConnect

In a bid to increase participation in sailing, which means more activity at the club and more crew on boats, the club has formally adopted SailConnect as the preferred method of crew communication.

SailConnect is free and provides an ideal platform for boats and crew to engage. Whether it is week-to-week with regular crew - for regular events or a chance to find and meet new crew or new boats, we'd like to encourage everyone to get on board.

The club has listed all upcoming events and will encourage all members to download and list their profile and interest to sail via SailConnect.

If you own a boat – you can join an event and invite your crew in seconds. This will give you 100% transparency as to who is coming. Need more crew? Find those who have registered a specific interest in the event and connect with them, or search general crew - filtering by location and availability.

If you crew and want to sail more - proactively register interest in the events that interest you, see boats that are participating, who has space and make a connection.

SailConnect is the only platform supported by Australian Sailing and there are many benefit for the sport if we all get behind it so download and take a look today.



M



T



Y



C

Looking For Crew???

Sailors have registered their interest in crewing in MTYC Events

on the SailConnect app.

Download the app from either



you can join an event and invite your crew in seconds.

This will give you 100% transparency as to who is coming.

Find those who have registered a specific interest in the event and connect with them.

There are currently crew interested in Thursday Twilight Racing, & Traveller Series Events.

Make the most of your MTYC Membership & register YOUR interest in an event.

MTYC Skippers,

With the start of another sailing season

it's time to complete your safety declaration & checklist.

MTYC Sailing Instructions (for all races) stipulates

All boats shall comply with the Safety Requirements of Australian Sailing (AS), Special Regulations Part 1, Category "5".

This level of compliance is also STRONGLY recommended for all cruising events also.

email completed forms to mtyc.au@gmail.com

or Post hard copies to:

MTYC Safety Officer,

17 Picadilly St

Oakleigh South. 3167



Melbourne Trailable Yacht Club

Season 2018-2019

Sailing Safety Compliance Declaration & Checklist

DECLARATION BY OWNER OR OWNER'S REPRESENTATIVE:

*I have read and understand my obligations as set out in **Part 1** of the Australian Sailing Special Regulations 2017 - 2021, in particular 1.02.1, 1.02.2 and 1.02.3 – Responsibility Of The Person In Charge.*

I understand that receipt of this Declaration by the Club does not imply any responsibility of the Club for the seaworthiness and completeness of safety equipment for the boat.

I understand that an auditor does not limit or reduce the complete and unlimited responsibility of The person In Charge, as defined in SR's 1.02.1, 1.02.2, and 1.02.3 and 2.03.1.

Signed: _____ **Date:** _____
The Person In Charge.

Declaration received by: _____ **Date:** _____

Required information

Boat Name _____ Sail Number _____

Design/Class _____

Hull Colour _____ Deck Colour _____ Vessel Registration Number _____

Skipper/Owner _____

AS Membership Number _____

	<i>Tick the box in the Category 5 or Category 5N column for each clause to indicate compliance or N/A if not applicable to this boat.</i>		
Clause	Item Description	Cat 5	Cat 5N
2.03.1	All equipment shall function correctly, be maintained correctly		
2.03.2	Heavy items to be securely installed and fastened.		
3.01.2	Trailable boat not complying with 3.04.2 or 3.08 shall be buoyant to support the boat, it's crew and stores above the water when fully swamped.		
3.01.5	Ballast tanks permanently installed		
3.01.6	Manual control and actuation of moveable ballast systems.		
3.02	Hull, deck, hatches and windows can be made watertight		
3.02.2 (b)&(c)	Centre board and dagger board trunks shall be watertight		
3.02.3 (a)	Positive hold-down lock on movable keels and centreboards		
3.04.1	Boat to be designed and built to resist capsize per Appendix B		
3.06.1 (b)	Boats 5.5m LH and longer of any Age Date and with enclosed cabins which carry any liquid fuel or gas below decks while racing shall have two exits as in 3.06.1(a).		
3.07.1 (a)	No hatch, window or port forward of the maximum beam station shall have a lid or cover that opens inwards, except ports with an area less than 0.071 m2.		
3.07.1 (b)	Hatches, windows or ports not conforming with 3.07.1(a) are permitted if clearly labelled and used in accordance with the following instruction "NOT TO BE OPENED AT SEA"		
3.07.4	Removable hatches to have locks and lanyards		
3.07.4 (a) (i) & (ii)	Companionway hatch operable from above and below, function independently of any blocking device		
3.08.1	Cockpit to be strong and self-draining		
3.08.7	Cockpit drains as per table		
3.09	Sea-cocks or valves on all through hull openings		
3.09.1	Seacocks or valves shall be permanently installed on all through hull openings below LWL and plugs available for each through hull fitting.		
3.12.3 (f)	Stanchions and pulpits shall be securely attached to boat.		
3.12.6 (a)	Lifelines to be uncoated stainless steel wire		
3.12.6 (d)	Lifeline gap at ends not to exceed 100mm		
3.12.6 (e)	Lifeline to be uncoated stranded stainless steel as per table		
3.15.2	Toilet securely installed or fitted bucket		
3.17.2	Cooking stove secure and with fuel shutoff		
3.17.3	Gas to be used only for cooking		
3.17.4 (a)	"Remember Turn off Gas at Bottle" sign near appliance		
3.17.4 (b)	Boats with gas systems using permanent flames shall have gas detectors fitted		
3.17.5	Disposable Gas canisters less than 225grams capacity		
3.17.6	Gas containers to be contained in ventilated external location		
3.19	Adequate hand-holds in cabin		
3.20.5	One manual bilge pump if space below floor inadequate for bailing with bucket		
3.20.6	Bilge pump only discharge into cockpit if cockpit opens to sea and not connected to cockpit drains		
3.20.9	Two buckets of stout construction (9 litre min.) with lanyards		
3.22	At least two halyards in each mast		

Signature of The Person In Charge:.....

Clause	Item Description	Cat 5	Cat 5N
3.23.1	Navigation lights		
3.23.4	Reserve navigation lights available		
3.24.3	Engine, permanently installed or outboard		
3.24.4	Outboard engine shall be mounted at all times and the mounting may be raised but not removed.		
3.24.5	Adequate engine performance and fuel carried		
3.24.6	Separate battery for electric start engines		
3.24.8	Fixed fuel tank to have shut-off valve		
3.24.9	Fuel tanks for Inboard engines to be of appropriate material and permanently installed		
(a)&(b)			
3.25	HF or VHF or 27 MHz transceiver installed as specified		
3.25.6	Handheld VHF minimum 5w output		
3.28	Hull Identification (all >50mm high): boat name & state rego; OR name, sail number & club.		
4.01.1	Sail numbers shall be carried in accordance with RRS 77 and Appendix G.		
4.04	Fire extinguishers – one of a minimum 10B(E) rating of dry powder or equivalent		
4.04.4	Fire blanket adjacent to every cooking device with an open flame.		
4.05.1	Primary anchor as per table, with appropriate chain and rope		
4.05.1 (d)	Provision to secure bitter end of warp		
4.06.2	Water resistant and floating flashlights with spare bulbs and batteries		
4.07.2	First Aid manual		
4.07.9	Medical kit as per table, stored in labelled water proof container		
4.10.1	Navigational chart carried (not solely electronic)		
4.10.3	The current Australian Sailing Racing Rules of Sailing and Special Regulations Part 1		
4.14.1	Emergency tiller available for non-tiller boats		
4.14.2	Crews must be aware of steering the boat in any sea condition in the event of rudder loss		
4.15.1	Tools available including means of disconnecting rigging		
4.15.3	Sharp knife in or near cockpits		
4.16.1	Boats name on buoyant equipment		
4.16.2	Personal PFDs marked with owners details		
4.17.1	Retro-reflective tape fitted to lifebuoys and life slings		
4.22	Pyrotechnics stored in waterproof container and in date.		
4.23	Heaving line accessible to cockpit		
4.26	All boats shall be able to demonstrate equipment or method by which crew may be assisted back on board.		
5.01.1 (a)	Each crewmember shall have one lifejacket as follows: 5.01.1(i) A lifejacket complying with AS4578-2015 (minimum Level 50) or AS1512-1996 Type 1 or Type 2, or equivalent or more stringent overseas standard.		
5.01.1 (j)	On a boat without lifelines complying with 3.12, a lifejacket complying with 5.01.1(i), shall be worn by each member of the crew while on deck		
5.01.1 (k)	A lifejacket complying with AS4758-2015 (minimum Level 100) or AS1512-1996. Type 1 (not less than 100N) or an equivalent or more stringent overseas standard, shall be worn by each member of the crew.		
5.01.2 to 5.01.6	Lifejackets (including combined harness) comply with standard authority's approval mark, and are checked regularly for serviceability (annually for non-inflatable, at manufacturer prescribed intervals for inflatable).		
5.03	Personal light (strobe or SOLAS LSA 2.2.3) to be carried by or attached to each crew member when on deck at night.		

Signature of The Person In Charge:.....