



MTYC 2024 WINTER SERIES

Melbourne Trailable Yacht Club Inc

Heats 1 & 2	Sunday 19 May
Heats 3 & 4	Sunday 16 June
Heats 5 & 6	Sunday 21 July
Heats 7 & 8	Sunday 18 August

NOTICE OF RACE

1. Rules

1.1 The event is governed by the rules as defined in 2021-2024 *The Racing Rules of Sailing*.

1.2 The notation '[DP]' in a rule means that the penalty for a breach of the rule may, at the discretion of the protest committee, be less than disqualification.

2. Sailing Instructions

2.1 The sailing instructions will consist of the instructions in RRS Appendix S, Standard Sailing Instructions, and supplementary sailing instructions that will be available at <https://mtyc.yachting.org.au/racing/winter-racing/> or from the Race Officer at the Pre-race briefing.

3. Communication

3.1 All boats shall carry a VHF radio capable of communicating on channels 16, 72, 73, and 82.

3.2 On the water, the race committee will make courtesy broadcasts to competitors on VHF radio. The channel will be stated in the Sailing Instructions.

3.3 While racing, from the first warning signal until the end of the last race of the day, except in an emergency, a boat shall not make voice or data transmissions and shall not receive voice or data communication that is not available to all boats.

4. Eligibility & Entry

4.1 The Series is open to members of the Melbourne Trailable Yacht Club Inc. (MTYC).

4.2 A current, signed Declaration of Compliance & Safety Equipment Checklist, is required for each yacht and must be lodged with the MTYC safety Officer or Race Official.

- 4.3 Visitors will be included in the individual race results but will not be included in the Series results.
- 4.4 Visiting yachts must either show a current 'Cat 5' sticker or complete and sign a Declaration of Compliance & Safety Equipment Checklist on the day.
- 4.5 Yachts entered as standard yachts of a recognised class shall comply with the class rules.
- 4.6 The 2019 National CBH handicapping system applies.
- 4.7 Where boats do not have a listed CBH or Yachts not complying with class rules MTYC reserves the right to allocate a Provisional Handicap.
- 4.8 Yachts not complying with class rules must provide accurate information for The Race Committee to set or adjust Provisional Handicap.
- 4.9 Visiting skippers and crew that are not members of another yacht club and therefore do not have a current Australian Sailing membership can obtain a MTYC SailPass at <https://mtyc.yachting.org.au/registration/>
- 4.10 New members to MTYC are eligible to enter the Series. Races sailed as a visitor prior to joining MTYC will be considered.

5. Fees

- 5.1 All races in the series are free to MTYC members.
- 5.2 Visitor entry fee \$10 per day.

6. Crew Limitations

- 6.1 Crew shall consist of at least one adult and one other person capable to handle the boat independently.

7. Schedule

- 7.1 Refer to the list of dates at the start of this Notice of Race.
- 7.2 Briefing: Approx. 09:45 hrs.
- 7.3 The first race start will be at 11:00 hrs or as otherwise advised. The second race start time will be as soon as practicable after the last boat finishes the first race.
- 7.4 Multiple starts may be scheduled depending on the range of CBH's between the competing yachts.

8. Venue

- 8.1 Briefings are held in the vicinity of the public boat ramp at St Kilda Marina.
- 8.2 The racing area will be on Port Phillip as shown in the illustration attached.

9. Courses

- 9.1 The courses shall be short, not longer than 10 nm in length.
- 9.2 The course shall be as described in the sailing instructions or as modified at the Briefing Session, on the day of racing.

10 Scoring

- 10.1 Completion of one (1) race will constitute a series.

- 10.2 Race Results will be calculated for two series based on Performance Based Handicap (PBH) and a Class Based Handicap (CBH) result.
- 10.3 A boat's series score shall be the total of her race scores excluding her worst score after 5 races have been completed.

11. Prizes

- 11.1 At the end of the series trophies will be awarded for 1st, 2nd and 3rd for PBH and CBH.
- 11.2 Perpetual trophies for 1st overall PBH and 1st overall CBH will also be presented at the Annual Presentation Dinner.
- 11.3 Trophies for CBH and PBH will be awarded on the day to the combined results for both races. (11+ entrants – 1st, 2nd and 3rd; 6 -10 boats – 1st and 2nd; less than 6 entrants – 1st only).

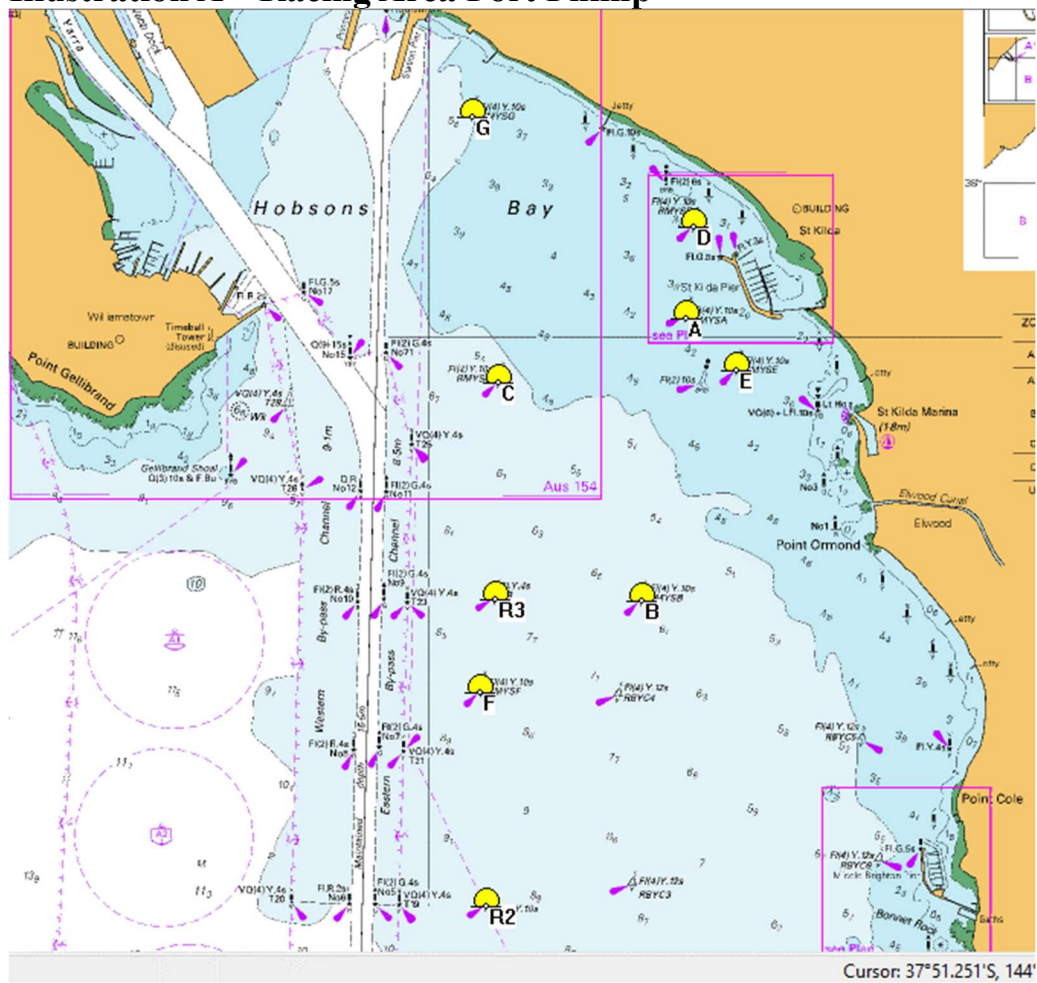
12. Insurance

- 12.1 All participating yachts shall be insured with valid third-party liability insurance having a minimum cover of \$10,000,000.

13. Indemnity

- 13.1 All participants compete in races conducted by the MTYC at their own risk.
- 13.2 MTYC is not responsible for the sea worthiness of a yacht whose entry is accepted, or the sufficiency or adequacy of its equipment or its crew.
- 13.3 MTYC accepts no responsibility for any damage, injury or loss sustained by any boat, equipment, or crew and/or persons associated, whether ashore or afloat and whether or not occurring during any rescue operation.
- 13.4 Attention is drawn to Racing Rules of Sailing Fundamental Rule 4 – Decision to Race: “The responsibility for a boat's decision to participate in a race or to continue racing is hers alone.”

Illustration A – Racing Area Port Phillip



13. Further Information

Contact: Race Officer, Mr Doug Whitby,

Mob: 0417 148 898

Website: mtyc.yachting.org.au

Email: mtyc.au@gmail.com