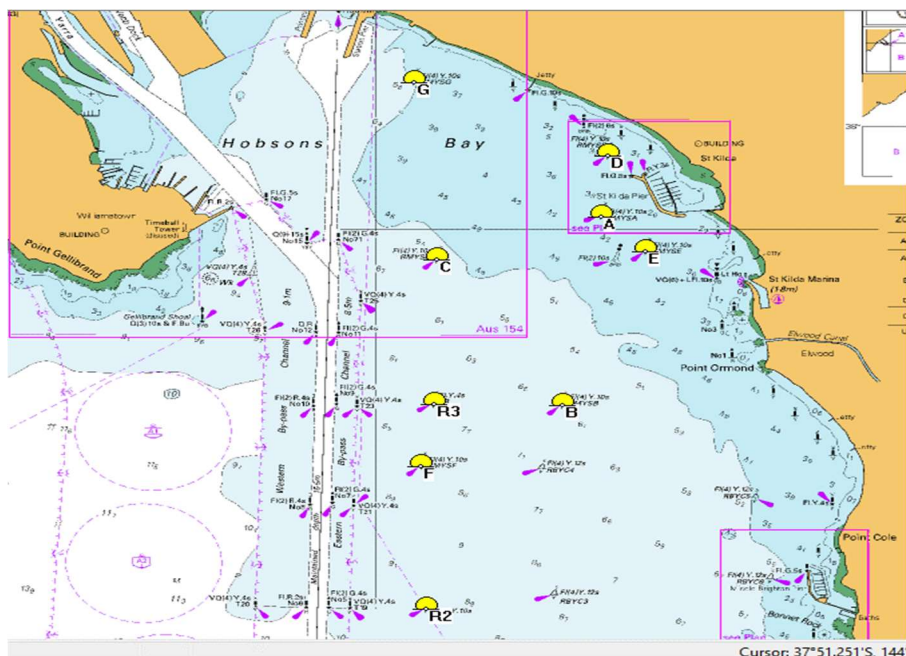


SAILING AREA, APPROXIMATE MARKS LOCATION

| Mark | Description | Latitude | Longitude |
|--------|-----------------|---------------|----------------|
| RMYS A | Yellow Buoy | 37° 51.899' S | 144° 57.485' E |
| RMYS B | Yellow Buoy | 37° 53.186' S | 144° 57.217' E |
| RMYS C | Yellow Buoy | 37° 52.178' S | 144° 56.421' E |
| RMYS D | Yellow Buoy | 37° 51.505' S | 144° 57.472' E |
| RMYS E | Yellow Buoy | 37° 52.156' S | 144° 57.799' E |
| RMYS F | Yellow Buoy | 37° 53.588' S | 144° 56.308' E |
| RMYS G | Yellow Buoy | 37° 50.943' S | 144° 56.109' E |
| R3 | Spar, Special | 37° 53.260' S | 144° 56.300' E |
| ID | Isolated Danger | 37° 52.197' S | 144° 57.539' E |



21 INDEMNITY

Competitors participate in the series races entirely at their own risk. See RRS 4, Decision to Race. The organising authority will not accept any liability for material damage, or personal injury, or death sustained in conjunction with, or prior to, during or, after the regatta.



Melbourne Trailable Yacht Club Inc. Winter Series 2024 Sailing Instructions

1 RULES

- 1.1 All Races shall be governed by the 2021-2024 Racing Rules of Sailing.
- 1.2 All boats shall comply with the Safety Requirements of Special Regulations Part 1, Category 5, of Australian Sailing (AS)

2 BRIEFING – Will be held at approximately 09:45 in the carpark or as advised by the Race Officer.

3 SIGNING ON – All boats intending to sail, are to advise the Race Officer of their intention to race. Before starting a race, each boat must complete a radio sign on check with the nominated radio yacht. Any boat that does not complete a radio sign on check prior to starting will be considered a non-starter & given a race result DNS (Did Not Start)

4 MARINE RADIOS VHF Radios must remain on during the race and tuned to VHF channel 72 (or the channel nominated by the Race Officer)

5 PERSONAL BUOYANCY – an approved Personal Floatation Device (PFD type 1 or 2) shall be worn by each crewmember at all times whilst racing.

6 HANDICAPS – Race Results will be calculated based on Performance Based Handicap (PBH) & Class Based Handicap (CBH). New starters will start from CBH & gain a PBH over a number of races.

7 COURSES – The course for the first race of the day will be indicated at the Briefing by the Race Officer or confirmed via VHF radio prior to the Warning Signal. The course for the second race of the day will be confirmed by the Race Officer via VHF radio prior to the Warning Signal.

8 STARTING TIMES

1st Race shall be at 11:00

2nd Race the warning signal will be no less than 10 minutes after the last yacht finishes the first race.

9 START LINE – will be between an Orange Flag MTYC mark at the port end of the starting line & the nominated mark (as listed on the Table of Courses) to form the starting line.

10 START SEQUENCE- Races will be started using Rule 26, with the warning signal made 5 minutes before the starting signal, and modified as follows: No flag signals will be used and the sound signals may be made by one of the competing yachts as nominated at the briefing. The following sound signals shall be made

| | |
|-----------------------------------|------------------|
| PRE-WARNING | FOUR SHORT HORNS |
| WARNING SIGNAL (5 Min) | SOUND SIGNAL |
| PREPARATORY SIGNAL (4 Min) | SOUND SIGNAL |
| ONE MINUTE | SOUND SIGNAL |
| START | SOUND SIGNAL |

11 RECALLS- Any yacht that starts early must re-start by returning to the pre-start side of the starting line.

12 FINISHING LINE – the finishing line will be the same as the starting line. **The first boat to finish will record the finishing times of all yachts.**

13 TIME LIMIT

13.1 The leading yacht shall cross the finishing line within 2 hours of the start, with remaining yachts to finish within 30 minutes of the leading yacht to be considered a finisher.

13.2 If no boat has passed the first mark within 60 minutes the race will be abandoned

14 CHANGES TO SAILING INSTRUCTIONS

Including postponements or abandonment shall be advised by the Race Officer at the pre-race briefing or by VHF radio.

15 SHORTENED COURSE – The leading yacht shall after **90 minutes** stop at the next mark of the course, thus making that the shortened course finishing line. The leading yacht shall then take the finishing times as the yachts pass round that mark & advise all yachts that the race has been shortened via radio, or as they round that mark to finish. All yachts must finish within 30 minutes of the leading yacht.

16 RETIRING YACHTS – Yachts retiring shall notify the Race Officer or another Yacht in the fleet of their intention to retire.

17 PENALTIES- Rule 44 of Part 4 (Penalties for breaking the rules) shall apply for infringement of a rule of Part 2 of the racing Rules.

18 PROTESTS – Protests if necessary, will be heard only after an application is made with an associated fee of \$10. The protest will be heard in accordance with the Racing Rules of Sailing.

TABLE OF COURSES

| Crs | Wind | Start | Marks | | | | Finish | Rounding | Nm |
|-----|------|------------------------------------|-------|---|---|----|--------|----------|-----|
| S1 | N | B | A | C | B | A | B | Port | 5.0 |
| S2 | NE | B | E | C | B | E | B | Port | 6.0 |
| S3 | E | C | E | A | C | E | C | Port | 5.5 |
| S4 | SE | C | B | E | C | B | C | Port | 6.5 |
| S5 | S | A | B | C | A | B | A | Starb'd | 6.2 |
| S6 | SW | E | R3 | B | E | R3 | E | Port | 7.1 |
| S7 | W | E | C | B | E | C | E | Port | 6.4 |
| S8 | NW | E | G | C | E | G | E | Port | 9.1 |
| S9 | Any | Windward-Leeward Course – 2 Laps | | | | | | | |
| S10 | Any | Windward – Leeward Course – 3 laps | | | | | | | |

Windward/Leeward Course

